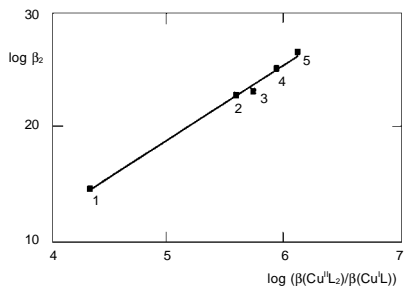


Collect. Czech. Chem. Commun.
1998, 63, 1963–1968

Electrochemical Studies of the Stability of Copper β -Diketone Chelates

Wulfhard Mickler, Anke Monner
and Erhard Uhlemann



Collect. Czech. Chem. Commun.
1998, 63, 1969–1976

On the Calculation of Transition State Activity Coefficient and Solvent Effects on Chemical Reactions

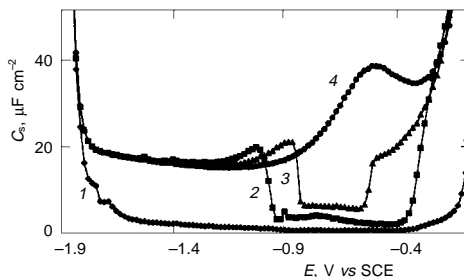
Alvaro Dominguez, Rafael Jimenez,
Pilar Lopez-Cornejo, Pilar Perez
and Francisco Sanchez

$$k = k_0 \frac{\gamma_A \gamma_B}{\gamma_{\ddagger}} \quad ?$$

Collect. Czech. Chem. Commun.
1998, 63, 1977–1993

Adsorption and Condensation of Xanthine at the Mercury/Solution Interface

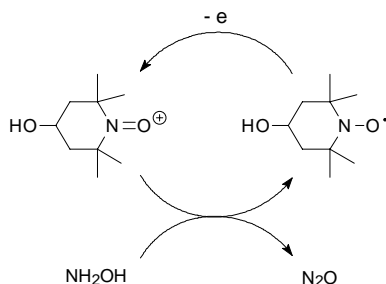
Viktor Drazan and Vladimir Vetterl



Collect. Czech. Chem. Commun.
1998, 63, 1994–2000

Catalytic Activity of 4-Hydroxy-2,2,6,6-tetramethylpiperidin-1-oxyl in Homogeneous Electrooxidation of Hydroxylamine

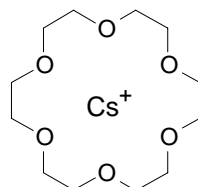
He Xia and Hulin Li



Collect. Czech. Chem. Commun.
1998, 63, 2001–2008

Extraction of Cesium with Bis[undecahydro-7,8-dicarba-undecaborato(2-)]cobaltate(1-) in the Presence of 18-Crown-6

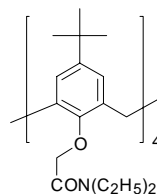
Petr Vanura and Emanuel Makrlík



Collect. Czech. Chem. Commun.
1998, 63, 2009–2014

Extraction of Alkaline and Alkaline-Earth Metal Cations at Synergistic Action of Bis[undecahydro-7,8-dicarbaundecaborato(2-)]cobaltate(1-) and Substituted Calix[n]arenes in Nitrobenzene

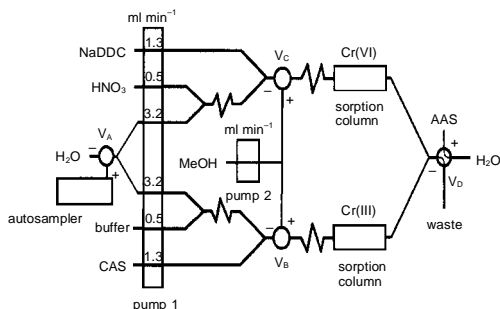
Petr Vanura and Ivan Stibor



Collect. Czech. Chem. Commun.
1998, 63, 2015–2026

On-Line Simultaneous Sorption Preconcentration and Determination of Chromium(III) and Chromium(VI) with AAS Detection

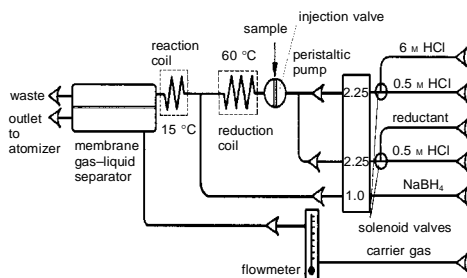
Petr Rychlovský, Milan Krenzelok and Radka Volhejnová



Collect. Czech. Chem. Commun.
1998, 63, 2027–2035

The Use of a Membrane Gas-Liquid Separator for Flow Injection Hydride Generation Atomic Absorption Spectrometry On-Line Speciation and Determination of As(III) and As(V)

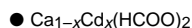
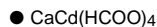
Milan Krenzelok and Petr Rychlovský



Collect. Czech. Chem. Commun.
1998, 63, 2036–2043

**Formation of a Double Salt and Mixed Crystals
in the $\text{Ca}(\text{HCOO})_2$ – $\text{Cd}(\text{HCOO})_2$ – H_2O System**

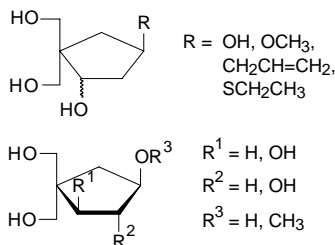
Violeta Z. Vassileva



Collect. Czech. Chem. Commun.
1998, 63, 2044–2064

**Synthesis of Carba Analogues of Deoxy-
4-C-(hydroxymethyl)pentofuranoses, Intermediates
in the Synthesis of Carbocyclic Nucleosides**

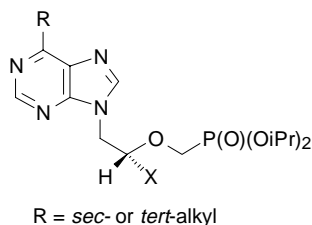
Hubert Hrebabecky, Milena Masojidkova
and Antonin Holy



Collect. Czech. Chem. Commun.
1998, 63, 2065–2074

**Synthesis of Acyclic Nucleotide Analogues Derived
from 6-(*sec*- or *tert*-Alkyl)purines via Coupling
of 6-Chloropurine Derivatives with Organocuprates**

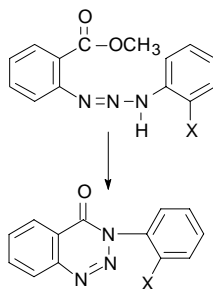
Hana Dvorakova, Dalimil Dvorak and Antonin Holy



Collect. Czech. Chem. Commun.
1998, 63, 2075–2084

**Steric Effects in the Base-Catalyzed Cyclization
of 1-[2-(Methoxycarbonyl)phenyl]-3-
(2-substituted phenyl)triazenes**

Miroslav Ludwig and Ingrid Bauerova



Collect. Czech. Chem. Commun.
1998, 63, 2085–2091

Immunostimulant Activity of Peptides Related to Human β -Casein Fragment Gly-Leu-Phe

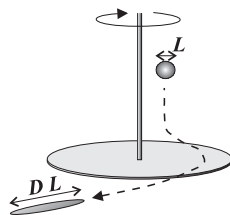
● (Gly-Leu-Phe)-analogues

Sushma Shukla, Anju Puri, Ragini Sahai,
Bijoy Kundu, Lalit M. Tripathi
and Vishwa M. L. Srivastava

Collect. Czech. Chem. Commun.
1998, 63, 2092–2102

Relative Shear Deformation of Non-Newtonian Liquids in Impeller Induced Flow

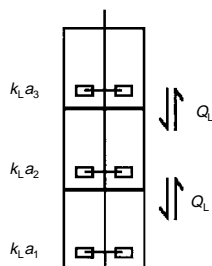
Kamil Wichterle and Pavel Mitschka



Collect. Czech. Chem. Commun.
1998, 63, 2103–2113

Effect of Liquid Axial Mixing on Local $k_L a$ Values in Individual Stages of Multiple-Impeller Vessel

Tomas Moucha, Vaclav Linek
and Jiri Sinkule



Collect. Czech. Chem. Commun.
1998, 63, 2114–2122

Free Convective Mass Transfer at Down-Pointing Isosceles Triangles of Varying Inclination

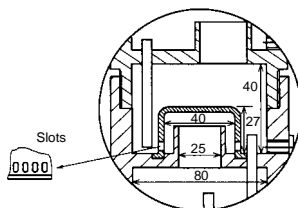
- Electrochemical deposition of copper
- Comparison of triangular and rectangular surface
- Mass transfer correlation

Josef Krysa, Fukuya Iino
and Anthony A. Wragg

Collect. Czech. Chem. Commun.
1998, 63, 2123–2130

Mass-Transfer Efficiency of a Small-Size Teflon Bubble-Cap Tray

Peter S. Petrov and Penka V. Genkova



The plate efficiency of newly constructed small-size Teflon tray shown above is predicted most reliably by the equation of MacFarland and the point AIChE method.